



2015 GHSA Region 7AAAAA Cross Country Championships



- **Date: Wednesday October 28, 2015**
- **Schools attending:** Cambridge, Cass, Creekview, Dalton, Forsyth Central, Kell, North Atlanta, North Springs, River Ridge, Riverwood, Rome, Sequoyah, Sprayberry, Woodland
- **Place: Boling Park, Canton GA**
- **Hosted by Sequoyah, River Ridge, and Creekview High School**
- **Contacts:**
 - James.Adams@cherokee.k12.ga.us for race information.
 - Tyrom.Brown@cherokee.k12.ga.us for payment information.
- **Race Schedule:**
 - 4:20 Coaches meeting if necessary
 - 5:00 am: Varsity Boys
 - 5:25 am: Varsity Girls
 - 5:50 am: JV Boys
 - 6:15 am: JV Girls
 - 6:50 am: Awards
- **Entry:**
 - No charge for Varsity. \$100 dollars per school if bringing JV.
 - **Make checks payable to Creekview Cross Country and mail to 1550 Owens Store Road Canton, GA 30115**
- **Timing**
 - All Timing and Scoring will be done by The Perfect Timing Group.
 - **All athletes must wear a bib number to be scored. Please be sure your athlete is wearing the correct number and Chip.**
 - **Chips must be returned or your school will be charged \$20 per chips.**
- **Awards:**
 - Top 4 teams in Boys and Girls varsity and top 3 in JV races will receive trophies.
 - Top 15 varsity male and top 15 varsity female runners will receive place medals.
 - Varsity Region Champion boy and girl will receive a Special trophy.
 - Top 15 boys and top 15 girls in JV race will receive medals in chute.



2015 GHSA Region 7AAAAA Cross Country Championships



- **Race Day Information**

- The race official will oversee uniform compliance, start the race, and will have final decision over all competition rule judgments: including finish order and course violations.
- Team packet pick-up at head tent close to Finish.
- Starting boxes will be assigned Alphabetical order Left to Right.
- **Admission: \$5.00 per adult \$2 student.**
- EagleSportz will be on site to sell tee-shirts, and other apparel items.
- Concessions will be available for purchase on the infield.
- **Canton Fire department will be onsite to provide emergency care.**
- **All tents should be set up outside of gravel loop path.**
- **Vehicles will not be permitted in the course area.**
- Please remind spectators and timers that the gravel path is the course and they should not lean into the course. They need to stay on the grass areas and that when crossing the course they need to be cognizant of competing runners.
- Porto-lets will be available.
- **NO DOGS ARE ALLOWED IN THE PARK**

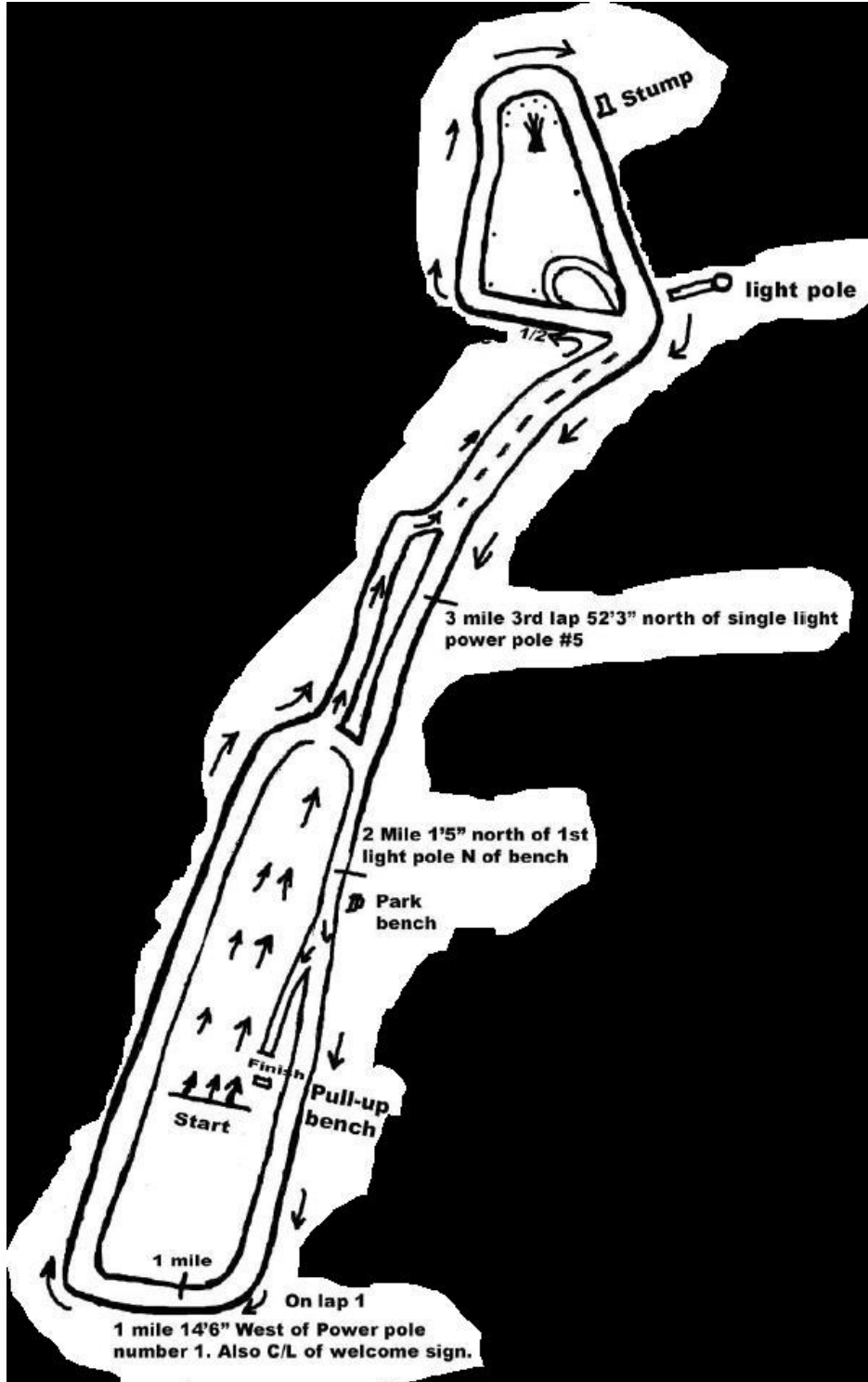


2015 GHSA Region 7AAAAA Cross Country Championships



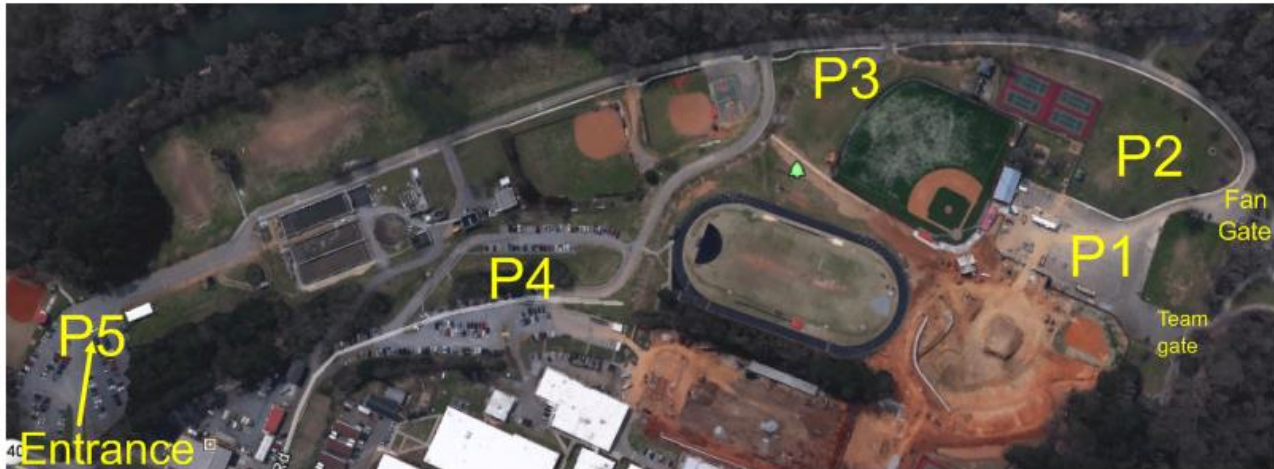
COURSE INFO: The course starts and ends on the infield. Three 1 mile loops will be run clockwise on packed gravel and approximately 3/4 miles on grass and compact dirt. This

will be the same setup as Cherokee's Warpath.





2015 GHSA Region 7AAAAA Cross Country Championships



- Several parking lots are available in the park. Volunteers will be present to direct parking.
- Spectators enter park through Yellow gate to pay entry fee.
- Teams only through team gate.



- Each team will have one parking spot in the lot labeled PTE for a **Team Equipment vehicle or Coach.**
- Busses will be parked next to each other in front spaces of P1 lot as illustrated in map.
- Passenger vehicles can park on P2 grass area next to parking lot. Volunteers will be present to help coordinate.
- Additional vehicles will be sent to P3, P4, and P5 (illustrated in larger map above)



2015 GHSA Region 7AAAAA Cross Country Championships



Directions to Boling Park, Canton

From the South:

1. Take I-575 North
2. Take the GA-5-BR N/GA-20 W/GA-140 W exit-EXIT 16-toward GA-140/Canton
3. When the exit splits keep left onto GA-5-BR N/GA-20 W/GA-140 W
4. At the traffic light turn right onto GA-5 BR N/GA-140/Marietta Highway
5. Follow GA-5 BR N/GA-140/Marietta Highway for approximately .6 miles
6. The entrance to Boling Park is on your left just after you cross over the Etowah River.

From the North:

1. Take APD-515/I-575 South
2. Take the GA-5-BR N/GA-20 W/GA-140 W exit-EXIT 16A-toward GA-140/Canton
3. At the traffic light turn right onto GA-5 BR N/GA-140/Marietta Highway
4. Follow GA-5 BR N/GA-140/Marietta Highway for approximately .6 miles
5. The entrance to Boling Park is on your left just after you cross over the Etowah River.

Alternately from the North:

1. Take APD-515/I-575 South
2. Take the GA-5-BR/Riverstone Pkwy./Canton exit-EXIT 20
3. Turn right onto GA-5-BR/Riverstone Pkwy.
4. Follow GA-5-BR/Riverstone Pkwy. for 1.6 miles to where GA-140 joins GA-5-BR and changes names to Canton Hwy.
5. Continue straight on GA-5-BR/GA-140/Canton Hwy. for .8 miles
6. The entrance to Boling Park is on your right just past the National Guard Armory